

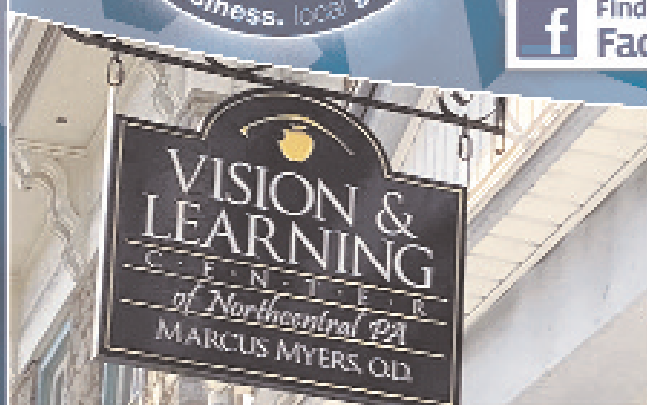
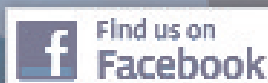


TO PRESERVE, PROTECT AND DEFEND THE FREE ENTERPRISE SYSTEM OF LYCOMING COUNTY

Mark your calendar for the
Science Festival

Welcome New Members

Applications now available
for Leadership Lycoming
Class of 2021



The Chamber View

Jason Fink, President/CEO

January has already passed and we're halfway through winter. While I am normally very happy to say that we've had a mild winter, I do have a twinge of sadness that it hasn't been colder. My youngest son, all fall, was talking about wanting to go ice fishing. This was something that we were looking forward to getting out on a local pond to do for the first time. Unfortunately, it doesn't look like the weather's going to cooperate this year so we'll be putting that on a next winter "to-do" list. And I was looking forward to getting him out locally to do just that.

We're well into planning here at the Chamber for the various programs that we have upcoming in 2020. Our Annual Meeting takes place in February and shortly thereafter in March we have our Education Celebration event. We kicked off the PM Exchanges, which for those of you not familiar with some of the program-

ming we do here, these are networking programs that we do for our members to help in facilitating doing business locally among our membership. Savoy Contract Furniture in Montoursville was the host of the Exchange and it was great to have people get a chance to tour their operations to see how they manufacture furniture. Having been through the plant on various occasions, it's good to have others experience the opportunity of getting into a production facility. Not everyone has this chance and it's great to showcase this to educate others about the type of work and skills sets that are employed in the manufacturing processes here in Lycoming County. Next month we get the chance to be at East Lycoming School District and Lycoming Engines. These are two that I've also gotten the opportunity to see before and would encourage those members reading this to take the time to

come out and see what's going on at each of these host locations.

In January, I also got the opportunity to be with Congressman Fred Keller, along with his administrative team and Frank Mazza from Senator Toomey's office, to tour Kellogg's plant in Muncy. It's always special to me in being able to tour the Kellogg's plant because of the pride that the entire team takes in the work they do there. This is one of three plants in the Kellogg's family that produces Pop-Tarts and they make on average 6 million Pop-Tarts daily. The plant employs over 350 people and runs on various shifts, a 24 hour, 7-day week schedule. In addition to the Pop-Tarts, they also make Nutri-Grain bars at a rate of about 2.8 million daily. The Kellogg's Muncy plant is the low cost producer of Pop-Tarts among the three plants. That's why they have the production schedule that they do

there. Just one example of many examples that I could cite in the pride that they take is the manner in how they handle waste and recycling. Unfortunately, not every Pop-Tart or Nutri-Grain bar comes out perfect. Couple that with occurring waste not directly associated with their production product like cardboard boxes, plastic and other such items that they need to dispose of in some manner. The Kellogg's team there has been so efficient in how they handle these items through recycling and repurposing (ie animal feed) that they generate a net profit from their overall waste disposal at the plant. That's just one example of the many that they have there in the team approach established at Kellogg's in addressing items such as this one.

Previously, I had mentioned about programming that we're working on for 2020, this also includes the ever popular Grand

Slam Parade in August. Our planning committee has already begun their work and the information for those looking to be considered for participating with an entry in it are posted online. All you need to do is go to grandslamparade.com and you'll find the criteria and entry form, along with vendor, volunteer, program advertising and sponsor forms. This is being shared now as we started receiving inquiries here to our office about these items on January 2. So come June 1 when the deadline is for getting your entry forms in, hopefully we don't have anyone contacting us saying they didn't know about it. As they say, it's never too late to be prepared. With that, I should start writing next month's column now so that Sharon (our editor) doesn't have to wait until the day before the deadline to be receiving it from me. Have a great February!



Williamsport/Lycoming Chamber of Commerce Staff	
Main Office - 570-326-1971	
President/CEO	Jason Fink
570-320-4213 - jfink@williamsport.org	
Editor	Sharon Jones
570-320-4202 - sjones@williamsport.org	
STAFF	
Vice President & Chief Financial Officer	Nancy Eischeid, CPA
570-320-4206 - neischeid@williamsport.org	
Accounting Clerk/Executive Assistant	Cindy Robbins
570-320-4201 - crobbs@williamsport.org	
Leadership Lycoming/Special Events Coordinator	Alexandra Lehman
570-320-4216 - alehman@williamsport.org	
Project Coordinator	Sharon Jones
570-320-4202 - sjones@williamsport.org	
Tourism Coordinator	Regina Edwards
570-320-4208 - gedwards@williamsport.org	
Marketing & Membership Coordinator	Taryn Mueller
570-320-4209 - tmueller@williamsport.org	
Receptionist	Amy Hamm
570-326-1971 - receptionist@williamsport.org	

Williamsport/Lycoming Chamber of Commerce 134th Annual Meeting & Awards Banquet



Thursday, February 13, 2020

11:45AM - 1:30PM

Holiday Inn Downtown

Registration Opens at 11:15AM

Join us as we review the accomplishments of 2019 and look ahead to developing an even better Lycoming County in 2020.

Awards to be presented

Phillips/Plankenhorn Small Business of the Year Award



**2019 Recipient
Hilsher Graphics**

Large Business of the Year Award

Sponsor: **M&T Bank**
2019 Recipient: **Savoy Contract Furniture**

Emerging Business Award

Sponsor: **S B D C**
2019 Recipient: **ClearView Asset Protection**

For more information or to make a reservation, call the Chamber at 570-326-1971
or register online at www.williamsport.org.



August 19, 2020

Tired of the cold weather? Ready to cement Phil's hole over in Punxsutawney? Wish you could be joining the pitchers and catchers reporting to Spring Training this month?

If you've already checked out of Winter and have warmer thoughts on your mind, know that in less than 7 months, it will be time for the world's eyes to focus on Williamsport for the 74th Little League World Series®.

That means plans are already underway for the 16th Grand Slam Parade. Any business, organization or group wanting to participate can get all the details by going to www.grandslamparade.com.

There you will find the criteria and entry application, sponsorship information, vendor registration, program ad and volunteer forms.
Application Deadline: June 1, 2020

The 2020 Lycoming County Visitors Guide is here!

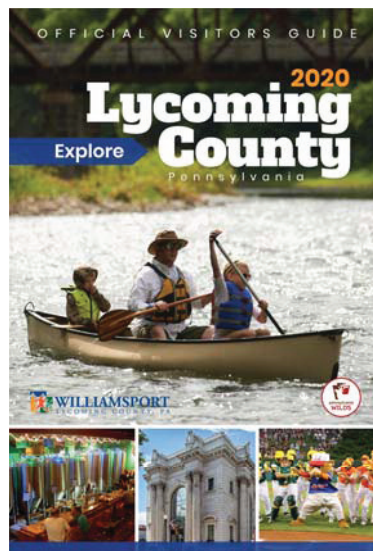
The Visitors Guide is full of useful information on what to do, where to stay, eat and shop throughout Lycoming County. Please pick up a copy of the visitors guide at the Visitors Center, located at 102 West Fourth Street, Williamsport or many other locations throughout the area.

The Lycoming County Visitors Bureau will be distributing the 2020 Lycoming County Visitors guides along with other regional and local brochures on a regular basis. The guides are delivered to hundreds of locations all over Lycoming County and neighboring counties. The schedule for delivery for the guide will be the months of February, April, June, July, August, October and December. If you would like to have your business receive the Lycoming County Visitors Guides, please contact Gina Edwards at 570.320.4208 or gedwards@williamsport.org.

Follow us on Facebook!



Lycoming County Visitors Bureau



E-Marketplace

Place your direct mail Marketplace flyer in our E-Marketplace Email blast for only \$75!

Be viewed by an additional 3100+ subscribers. Fill out the Marketplace registration form and email a PDF of your flyer to tmueller@williamsport.org.

Questions? Call the Chamber at (570) 326-1971.

February PM Exchanges...

East Lycoming School District

Thursday, February 6, 2020

5:00 - 7:00 pm

349 Cemetery Street, Hughesville

Have you ever wondered what high school is like now? Join us at Hughesville High School and take a trip forward in time with our "Innovation Center." Experience augmented reality, swim in the Galapagos Islands using virtual reality, program a robot or even build your own drone. High school isn't what it used to be!



Lycoming Engines

Thursday, February 20, 2020

5:00 - 7:00 pm

652 Oliver Street, Williamsport

Lycoming Engines, a piston aviation engine manufacturer, invites you for refreshments, tours, and more.

Please wear closed-toe shoes for factory tours.

NOTE: No cell phones or cameras will be permitted inside.



Upcoming PM Exchanges...

Mar 12



357 Market Street
Williamsport, PA

Mar 26



Krapf Gateway Center
Williamsport, PA

**Call the Chamber of Commerce today at (570) 326-1971
or visit www.williamsport.org to make your reservations.**

Welcome New Chamber Members!

Anchor Air Systems

Ms. Cindy Rutherford
Hughesville, PA 17737
570-419-5235

www.anchorairsystemsllc.com

HVAC Plumbing

Billtown Autoworks LLC

Mr. Jay Edkin
205 Fleming Street
S. Williamsport, PA 17702
570-666-3265

Check us out on Facebook
Automotive Repair

Endless Mountains Retreats, LLC

Mr. Eric Sauers
Muncy, PA 17756
570-360-9611
www.endlessmountainsretreats.com

Training & Education
Referred by Chamber Member:
Donna Bastian, Bastian Tire and Auto Centers

Mifflin County Academy of Science and Technology

Mr. Mike McMonigal
103 Allenwood Camp Lane
Montgomery, PA 17752
717-248-3933

www.theacademy.net
Training & Education

Resource Environmental Management, Inc.

Mr. Jerome Washo
50 Maple Street
Montrose, PA 18801
www.resourceem.com
Environmental Contractors

Interested in joining
the Chamber?
Call the office at
570-326-1971 or apply
online at:

www.williamsport.org

Chamber Member Discount

Working to meet the needs of our members

CELLHELMET IS EXCITED TO PARTNER WITH CHAMBER CHOICE

Members receive:

- 50% off all of our wireless accessories!
- Free Shipping available on all online orders!
- LIFETIME WARRANTY

Visit www.cellhelmet.com to see our whole line of screen protectors, charging cables, magnetic car mounts and more.
Or Call (888) 814-5968

Williamsport/Lycoming Chamber of Commerce Members
Discount Code: Williamsport Chamber

Williamsport/Lycoming Chamber of Commerce - 102 West Fourth Street - Williamsport, PA 17701
(570) 326-1971 - www.williamsport.org

For a complete list of upcoming Chamber events, visit www.williamsport.org

January PM Exchange

Montoursville Chamber of Commerce and Savoy Contract Furniture



Thank you to Savoy Contract Furniture for co-hosting the January PM Exchange with the Montoursville Chamber of Commerce. Guests were given tours of the plant and everyone was amazed with how furniture is produced for student and residence halls. Thank you to our sponsors; Appreciative Strategies, Ditty's Service Center, Heritage Springs Memory Care, Rep. Garth Everett, Huffman's Office Equipment, Jersey Shore State Bank, First Commonwealth Bank, The Muncy Bank & Trust Company, State Farm Insurance Tony Dgien, Woodlands Bank and Your CBD Store. Guests enjoyed an amazing spread of food from Mel's Catering. Receiving the certificate of appreciation is Adam Savoy, Chris Frantz and Deb Vail, Savoy Contract Furniture, from Will Daniels, Membership Development and Retention Committee, Williamsport/Lycoming Chamber of Commerce.

Ribbon Cutting

First Commonwealth Bank - Muncy



Chamber Members....

Looking for a way to get the word out to Lycoming County residents about your business?

Participate in a FREE ribbon cutting ceremony to celebrate your new business, anniversary or special occasion.

We provide gold scissors and decorative ribbon. Your event is posted to Facebook and you receive a framed photo to hang up at your business.

Contact Taryn Mueller at the Chamber
(570) 320-4209 or tmueller@williamsport.org

Congratulations First Commonwealth Bank located at 20 South Main Street, Muncy on your grand opening celebrations. Joshua Wyland, Financial Solutions Center Manager, welcomed fellow Chamber members and the public to enjoy food and drinks while enjoying the ribbon cutting and open house festivities. Thank you to (l to r) Trey Phillips, Jennifer Rempe, Jason Fink, and Will Daniels, Williamsport/Lycoming Chamber of Commerce, Cheryl Kwasney, Norma Kranzel, Nicole Dincher, Marcey Long, Josh Wyland, Jake Sears, Scott Frost, Brian Bowser, Tonya Robbins, and Daniel Morrow.

Highmark retail store gives human touch

By **DEREK DANNEKER**
ddanneker@sungazette.com

More than just selling health insurance, Highmark Blue Cross Blue Shield seeks to help people not just make educated decisions for their coverage, but for their everyday living, said an administrator.

Maintaining the insurance company's only brick and mortar store in the region is Kevin Brown, retail store manager, whose location has helped people work through seminars, consultations and even yoga.

"We're really big on preventative health awareness," he said.

The Highmark Blue Cross Blue Shield store, 1754 E. Third St., offers various fitness classes for members including "Boom, Stretch," which is a more "low-key" group activity, Brown said.

Additionally, the store offers several health fairs a year.

Many people come in with questions of traversing the different kinds of insurance, said Brown.

"They come in with a lot of anxiety because they're getting so much information out there and don't have a clue on how to start," he said.

The two main groups, Brown said he works with, are those who qualify for Medicaid and those over 65 years old who are getting started with Medicare, "so they're able to make an informed, educated decision based upon the information that we've provided for them."

A consultation involves finding out what the client's

needs are, what they can afford and then guiding them to that goal, he said.

Those making between \$16,500 to \$44,000 may want to look into Medicaid, where they can get a premium tax credit for whatever they may spend at the doctor's office, he said.

"Insurance has changed over the years," said Brown. "We used to be able to get an insurance, go anywhere, pay very little copays and deductibles and things of that sort. Unfortunately those days are over."

People need to be proactive in their approach, because not every doctor's office accepts the same insurance, he said.

"Anyone that I sell insurance to, I stress to them that they need to be the gatekeeper of their insurance," said Brown.

Knowing which doctor is in your network and which is outside of it may mean the difference between a small co-pay and paying the entire cost for the visit, he added.

The store exists to make people's lives easier when it comes to something so complex as insurance, he said.

"It's always nice to have a brick and mortar place where they can actually come in and get some of their questions answered, rather than call on the phone and get an automated system. We try to do a lot for our members," said Brown.

"Here at the store, we don't just sell insurance, we want them to be part of our family," he added.



DEREK DANNEKER/Sun-Gazette

Kevin Brown, store manager, above, works at his desk with many clients to ensure they're able to make an informed decision on their insurance. Below, Heather Seagraves, a front desk attendant, uses a blood pressure measurement device. Highmark Blue Cross Blue Shield helps many people make good insurance and general health decisions, administrators said.



1st Winter Classic a Success

The Lycoming County Visitors Bureau hosted the first Williamsport Winter Classic at the Liberty Arena on January 24-26. The Winter Classic was a fun-filled three days of pin trading. Representatives from Infiniti Pins, Wilson Trophy, DPH Custom Pins and Keystone Advertising Specialties attended

to sell and talk to all pin traders. Hundreds of pin traders from Pennsylvania, Florida, Michigan, Nevada and many other locations spent the weekend "making the best trade" and gearing up for pin trading in August.

Serious pin fanatics attended the 1st Winter Classic at the Liberty Arena for pin trading which attracted attendees from many locations. One of the pin vendors showcases their pins.



SATURDAY, MARCH 7, 2020 | 7:00 - 10:00 PM

at the Williamsport/Lycoming Chamber of Commerce
102 West Fourth Street, Williamsport, PA 17701

SPONSORSHIP OPPORTUNITIES

☐ \$2,000 EVENT SPONSOR (1 available)

Includes 6 Event Tickets and Passports, Recognition as Lead Sponsor and Logo on Printed Materials and in Chamber Connection

☐ \$1,200 FOOD SPONSOR (5 available)

Includes 4 Event Tickets and Passports, Recognition as Food Sponsor and Logo on Printed Materials and in Chamber Connection

☐ \$350 BEVERAGE SPONSOR (Unlimited)

Includes 2 Event Tickets and Passports, Recognition and Logo on Printed Materials and Chamber Connection

Company: _____ Contact: _____

Attendees: _____

☐ MasterCard ☐ Visa ☐ Discover ☐ AmEx CC#: _____

Exp. Date: _____ CVV: _____ Cardholder's Name: _____

Cardholder's Email Address (for receipt): _____

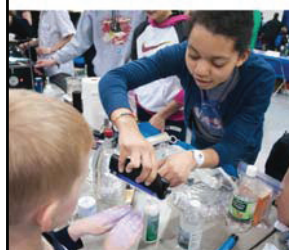
☐ Check Enclosed ☐ Please Invoice

Please return by **February 28, 2020** to the Williamsport/Lycoming Chamber of Commerce, 102 West Fourth Street, Williamsport
Phone: (570) 326-1971 or FAX: (570) 321-1209 or www.williamsport.org



WILLIAMSPORT
LYCOMING COUNTY, PA

Call for exhibitors!



SCIENCE FESTIVAL

Wednesday, March 4, 2020

Pennsylvania College of Technology

FIELD HOUSE

9 a.m.-2 p.m.

Sneak peek for 5th grade classes (up to 1,500 students expected)

5-8 p.m.

Open to the public

Science Festival is geared toward elementary and middle school students and their families. Hands-on activities and demonstrations should be STEM-related and encourage exploration in the STEM fields of study.

Don't miss out on this great opportunity to spark excitement about STEM (science, math, engineering, and technology) in our youth.

Reserve your FREE booth today.

Booths are limited and available first come, first served.

☐ Yes, we would like to exhibit.

Company _____

Address _____

Contact name _____

Phone _____

Email _____

How many tables (6' x 30") will you need? _____

How many chairs will you need? _____

How many electrical outlets will you need? _____

Additional setup requirements _____

EVENT COORDINATED BY
Pennsylvania College of Technology
A Penn State Affiliate



LYCOMING COLLEGE

Return completed form to

College Transitions & First Year Initiatives, DIF 129 ctfyi@pct.edu

Pennsylvania College of Technology
One College Avenue | Williamsport, PA 17701

Or sign up online at pct.edu/scifest

FEATURE MEMBER

Customers and community are top priorities for local bank

By C. D. Smith
Sun-Gazette Correspondent

When you step into the lobby of Susquehanna Community Bank at 2409 E. Third St., you find yourself surrounded by some of Williamsport's most iconic landmarks.

Large murals decorate the walls of the bank's newest branch office that opened in September 2019. The Hiawatha Paddlewheel Riverboat, a stage view of the Community Arts Center and the Old City Hall building are just some of the scenes that remind customers that Susquehanna Community Bank is truly a local bank.

The Williamsport location is the seventh branch office for the bank, which will mark its 100th anniversary in March. Michael Loeh, assistant vice president/commercial relationship manager, notes that the bank, which originated in West Milton, had a presence in the community prior to opening the Williamsport branch.

"For the last five or six years, we've been very active up here in the commercial lending side and developed a lot of good relationships," said Loeh.

The Williamsport area proved to be such a good market that the bank decided to go full-circle and add retail banking. This would not only allow commercial customers to bring their personal banking to Susquehanna Community Bank, but would also allow non-commercial customers an opportunity to bank with them.

The reception has been very positive thanks in part to the great location and open and contemporary design. The bank is close to where people live, work and shop and the goal is for customers to walk in and feel like they can have conversations and develop a relationship.

"With us, it's local people making local decisions," said Christopher Sullivan, vice president/commercial relationship manager. "Customer service is our number one point-of-view here — it's what it's all about."

While word of mouth has been a strong factor in the branch's success, their local people and technology are why customers want to do business with them.

"We've found that we've been able to put that technology in place just as much as larger banks and have the local decisions and timely and what we



C.D. SMITH/Sun-Gazette Correspondent

Lori Rummel, left, head teller, and DonnaJoy Perrotta, teller representative, sit ready to help customers at Susquehanna Community Bank.

YOUR LOCAL TECHNOLOGY PROVIDER

Here at Marco, we specialize in business IT. We know it. We live it. And we speak its language.

MARCONET.COM

marco
taking technology further

business IT
managed services
cloud services
copiers & printers
enterprise content management

100th Anniversary CD Special

Member FDIC

13 MONTHS • 2.00% APY*

In honor of our 100th anniversary...

Donate to a local charity & we will match your donation!*

SCB.BANK • (570) 568-6851

*Annual Percentage Yield (APY), accurate as of 1/27/20, is for a 13-month Certificate of Deposit (CD) with a minimum opening deposit of \$5,000. A minimum balance of \$0.01 is required to obtain 2.00% APY. Rate subject to change. Account will automatically renew at maturity for 12-months, beginning on maturity date. At maturity, the interest rate will be the same as the regular 12-month CD and the Anniversary CD features will cease. Withdrawals less than full amount will be subject to a 3-month interest penalty. Customer can exchange the rate once during the initial 13-month term. The exchange rate will be the interest rate offered on a regular 12-month CD. Fees may reduce earnings. Offer is subject to withdrawal at any time. Customer may choose to donate to one of seven provided 501(c)(3) charities when opening this CD. The donation will be based on 100% of the Anniversary CD opening balance. For example, if a \$10,000 CD is opened, the customer would donate \$10.00 and the Bank would match a \$10.00 donation. Donation will be debited from the Anniversary CD at maturity. Anniversary CDs that are closed out before maturity will forfeit their donation and our match donation. Donation is not required to receive 2.00% APY.

(See CUSTOMERS, Page D9)

Customers and community are top priorities for local bank

(From Page D8)

think are good solutions for our customers,” said Loeh.

Krysia Ziegler, community banking officer, says Susquehanna Community Bank is a full-service bank offering checking, savings, retirement products, consumer lending, and lending for businesses big and small. She adds that all of their services are personalized.

“Not all the banks in this area do their mortgage underwriting in-house, so we make all those decisions right here. We look at these as people, not just numbers we put into a system,” said Ziegler.

Susquehanna Community Bank also offers a Junior Bankers Club for customers 13 and under, as well as a Good Neighbors Club for customers over 50, holding several events annually for each club.

The bank also partners locally with Remax West Branch to participate in Heroes Home Advantage, a rebate program for those who protect, serve and care for our community. For their part in the program, the bank waives its \$700 document preparation fee for military, law enforcement, first responders, health care workers and teachers when they buy a home in Snyder, Union, Northumberland or Lycoming counties.

The Bank is also big on giving back to the community. According to Rebecca Yeager, marketing manager, they offer 15 to 20 events a year that employees can volunteer at, and plan to expand its reach into the Williamsport area this year.

In addition, charitable donations are frequently given to local non-profit groups and projects such as James V. Brown Library, Firetree Place, Kids United Community Playground and the American Red Cross — North Central PA to name a few.

The bank is celebrating its 100th Anniversary with giveaways each month and its annual customer appreciation day will be held the last Friday in June.

“We are going to make it bigger and better this year since it’s our 100th anniversary,” said Yeager. “Anyone is welcome to come out, customer, non-customer. We grill up hot dogs and have giveaways and it’s just a really fun time,” she said.

“We are very thankful for the reception we have had by the local community here and look forward to more people stopping in, getting to know us and seeing what we have to offer,” said Sullivan.

Susquehanna Community Bank on the Golden Strip in Williamsport can be reached at 570-505-5040. More information can be found on their website scb.bank or their facebook page.



C.D. SMITH/Sun-Gazette Correspondent

Shown above is the front of Susquehanna Community Bank at 2409 E. Third St. Krysia Ziegler, community banking officer, below, works at her desk.



Leadership Lycoming Learns About Education

The Leadership Lycoming Class of 2020 learned all about education in Lycoming County. The day started in the Penn College Madigan Library with a welcome and Penn College trivia game with President Davie Jane Gilmour. The class had round robin discussions with Chris Ray from Penn College Workforce Development, Carrie Wright and Alicia Derr from Commonwealth Charter Academy, Rebecca Gibboney from BLAST IU 17 and Joe Balduino from Lycoming College.

The class then headed to visit the Head Start program at the former Round Hills Elementary School. Carolyn Hawk and Laurel Cowher spoke to the class about STEP, Inc. and the Head Start program before touring the school. The class then headed to the Williamsport Area High School for lunch prepared by Culinary Arts students and a tour of the school. Finishing the day, the class had the opportunity to speak with a panel about mental health and bullying in schools. Panelists included

Chris Moser, Diakon Family Life Services Licensed Social Worker and Clinical Supervisor, Phyllis Seber, Williamsport Area High School Counselor and Natalie Serafini, Loyalsock Township School District K-12 Trauma Counselor.

Thank you to our sponsors, Lycoming College and Annmarie and Trey Phillips. Thank you to Penn College and Williamsport Area High School for providing meeting space, breakfast, lunch and tours and River Valley Transit for transportation.

Thank you to Landon Hodges, Steinbacher, Goodall & Yurchak and April Shimel, Hope Enterprises, Inc. for being class reporters.



Education Day 2020 started with a meet and greet with Dr. Davie Jane Gilmour, President, Pennsylvania College of Technology.



A car being worked on by a student at Williamsport Area High School as part of their CTE curriculum.



Carolyn Hawk and Laurel Cowher speak to the class of 2020 about the Head Start program and all that it offers for economically disadvantaged children in our area.



Karen Retorick, Andrée Phillips and Annmarie Phillips at the Millionaire Café, where students provided the group with a superb lunch after a busy morning.



www.leadershiplycoming.org

Follow us



Leadership Lycoming

FEELING LUCKY?



JOIN LEADERSHIP LYCOMING FOR
THIS YEAR'S

FINAL 3

- TICKET PRICE: \$100 (ADMITS 2)
- HORS D'OEUVRES AND BEVERAGES INCLUDED
- CHINESE AUCTION & 50/50

THROUGHOUT THE EVENT, TICKETS ARE DRAWN AT
RANDOM AND ELIMINATED. WHEN ONLY 3 TICKETS
REMAIN, THE TICKET HOLDERS MAY CHOOSE TO SHARE
\$3,000 OR CONTINUE THE ELIMINATION PROCESS TO
INCREASE THEIR PRIZE AMOUNT, WHICH MEANS...

...ONE LUCKY PERSON COULD HAVE A CHANCE
TO WALK AWAY WITH \$3000!

MARCH 27, 2020

5:30-7:30 PM

GENETTI HOTEL

200 W. FOURTH STREET, WILLIAMSPORT, PA



ALL PROCEEDS BENEFIT LEADERSHIP LYCOMING
A PROGRAM OF THE WILLIAMSPORT/LYCOMING CHAMBER OF COMMERCE

SPONSORSHIP PACKAGES

Food & Beverage Sponsor \$250	Event Sponsor \$500	Signature Sponsor \$750
1 Admission Ticket	2 Admission Tickets	3 Admission Tickets
3 Chinese Auction Cards	6 Chinese Auction Cards	12 Chinese Auction Cards
Twenty 50/50 tickets	Forty 50/50 tickets	Eighty 50/50 Tickets
	1 Reserved Table (8)	1 Reserved Table (8)

Please indicate your level of commitment:

___ Food and Beverage Sponsor (\$250) ___ Event Sponsor (\$500) ___ Signature Sponsor (\$750)

Company Name: _____ Contact Name: _____

Payment Method:

___ Please Invoice ___ Check Enclosed (payable to Leadership Lycoming) ___ Credit Card Card Type: _____

Card #: _____ Exp. Date: ____/____/____ CVV#: _____

Signature: _____ Cardholder's Email Address: _____

Return to: Leadership Lycoming, 102 West Fourth Street, Williamsport, PA 17701 or Fax: 570-321-1209
Leadership Lycoming is a 501(c)(3) charitable organization. Donations are tax deductible to extent allowed by law.
For more information contact Alex Lehman, Leadership Lycoming Coordinator at (570) 320-4216, by email
alehman@williamsport.org.

Want to get ahead as a professional in Lycoming County?



LEADERSHIP LYCOMING

is now taking applications for the Class of 2021

An immersive opportunity to learn about the businesses, organizations, agencies, and
history of Lycoming County in a way no other program offers.

- Network with area business and political leaders
 - Learn leadership skills
- Gain a better perspective on the county
- Discover the needs of vital non-profit organizations
- Work with classmates on local community volunteer projects

**Want to be a part of leading Lycoming County
to a bright and prosperous future?**

Apply today!

For more information or for an application, call 570-326-1971
Or visit www.leadershiplycoming.org for a downloadable form.

Application deadline is April 17, 2020

A program of the Williamsport/Lycoming Chamber of Commerce



Montoursville Chamber of Commerce



Broad Street Mini Park Project

Brick Paver Order Form

Limited time only—get your brick now

Engraving Information 4"x 8" Bricks may have up to three lines
of text with up to 17 Characters per Line

(this includes spacing and punctuation).

For more information on purchasing a brick, contact the Williamsport/Lycoming Chamber
of Commerce at 570-326-1971 or download application at www.williamsport.org.

Chamber Website - Online Services

Are you taking advantage of these?

Membership Directory - search by Keyword or Category.

Events Calendar - Our latest event dates, times, locations with
direct links to register.

Members Only MIC- Register for upcoming events, update your
company info, pay invoices online and more.

LeadershipLycoming.org - A program to learn about our
community and how to be a better Leader in Lycoming County.

Vacationpa.com - Bored this weekend? Do you know what's
going on in Lycoming County?

For more information regarding any of the above services, please
contact the Chamber at (570)326-1971.

**Go online at www.williamsport.org to check out our
services!**

SMALL BUSINESS

Petro's Jewelers works with over 100 years combined experience

By **MALLORIE McILWAIN**
mmcilwain@sungazette.com

Basin Street Plaza holds a special place for those looking for jewelry for their loved ones.

Petro's Jewelers, at which the staff holds a combined 106 years of experience, offers customizable jewelry for celebratory occasions as well as jewelry repair.

Mike Petro, owner, started his own jewelry repair business in 1978 before starting his retail store in 1985, said Heidi Womeldorf, manager.

Petro has serviced over 35 different jewelers in the area by helping them with repairs and other needs that other jewelers could not provide.

"There's only one of us," Womeldorf said.

The store, with its many experienced staff members who have worked for the store since it opened, creates handcrafted jewelry both in traditional styles and custom styles for those who are getting engaged, have anniversaries, need presents for loved ones during the holidays or jewelry for any occasion at any time.

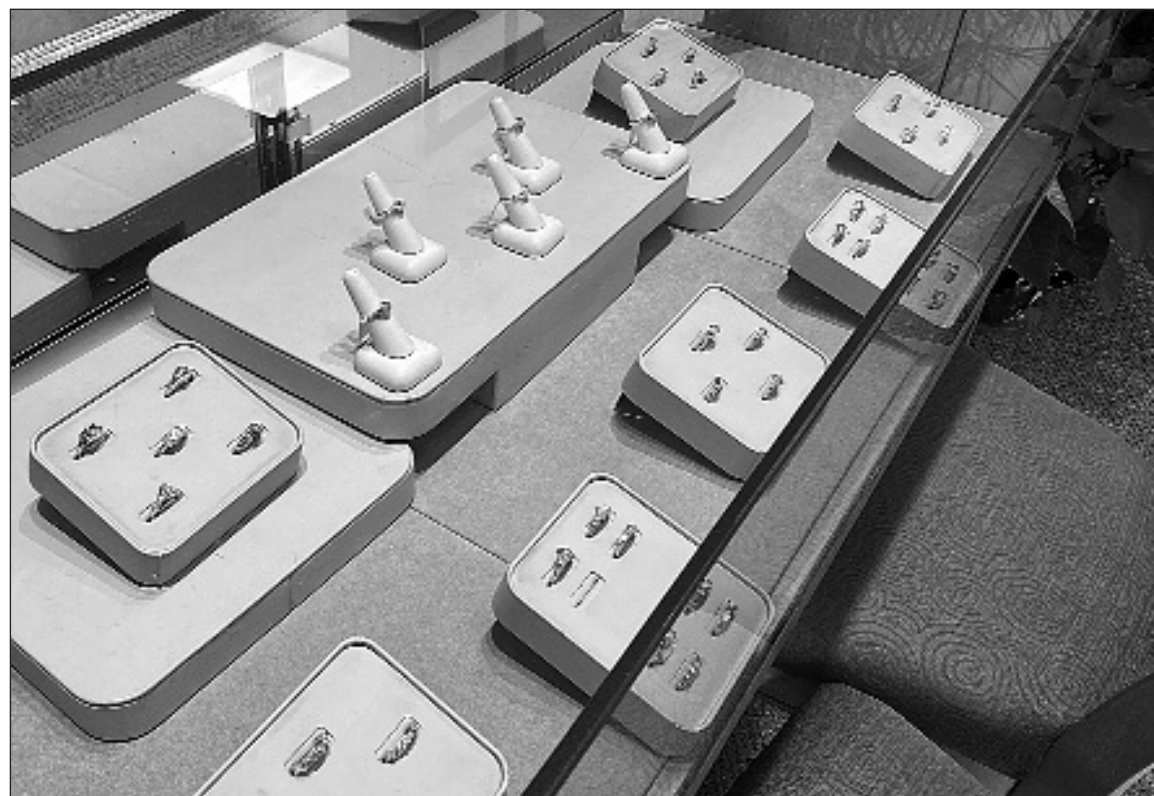
"We handle a lot of different situations, engagements, holidays, anniversaries," Womeldorf said. "But one thing that is nice is the customization."

She added that the jewelry store has a focus on experience and also creates pieces that have loved one's ashes in them from their passing.

"We focus on experience here. We remember people's birthdays and anniversaries. Jewelry has such a sentimental purpose," she said. "We aren't a needs store, we are a wants store, and it's important for the jewelry to be very special."

Petro and his staff are also connected to the city's community through donating to those who are in need.

"The need is greater every year," Womeldorf said. "Any way that we can assist the community, we absolutely want to do."



MALLORIE
McILWAIN/
Sun-Gazette

Above, from left to right, Clint Varner, Heidi Womeldorf, Tom Fink, Mike Petro stand behind a jewelry case at their Basin Street Plaza store. Rings sit in a case, left, for sale at Petro's Jewelers on Basin Street.

NEW MEMBER

First Commonwealth Bank emphasizes community

By **DEREK DANNEKER**
ddanneker@sungazette.com

Newcomers to the area since Sept. 2019, First Commonwealth Bank administrators said they're looking to network with the area's small business and give back to the community.

With 14 locations now open between Williamsport and State College, each one is attempting to help individuals navigate banking, said Michael Alexander, community office manager.

"Investing back in the community and small businesses is a big focal point of ours," he said. "It's not just to get their business, but it's also just to help them network, help them understand and answer questions."

Whether it's individuals looking for some advice or established family businesses looking to make a change, Alexander said First Commonwealth Bank will look to help.

"Obviously we want you to come bank with us and help you improve, financially, the best that we can, but at the end of the day we're also here to support small business whatever way we can," he said. "That's what I really, really enjoy about First Commonwealth Bank. When I say we're a community bank we really mean it, and we live by that."

The bank has already made donations to the SPCA and Family Promise, he said.

Moreover, many of the people who work for the bank often volunteer their time to charity, as they did during the holiday season when ringing a bell at Walmart for donations.

"We really take a lot of time and we try to find organizations or different groups that are really helping to make an impact in the communities that we ourselves are housed in," said Alexander.

The bank's generosity extended down to many of the employees who were kept after First Commonwealth Bank took over for Santander in the area, he said.

"As soon as they came in they made us feel welcomed as employees," said Alexander.

Throughout the hierarchy, then, the bank seeks to help customers manage, save, borrow and protect," he said.

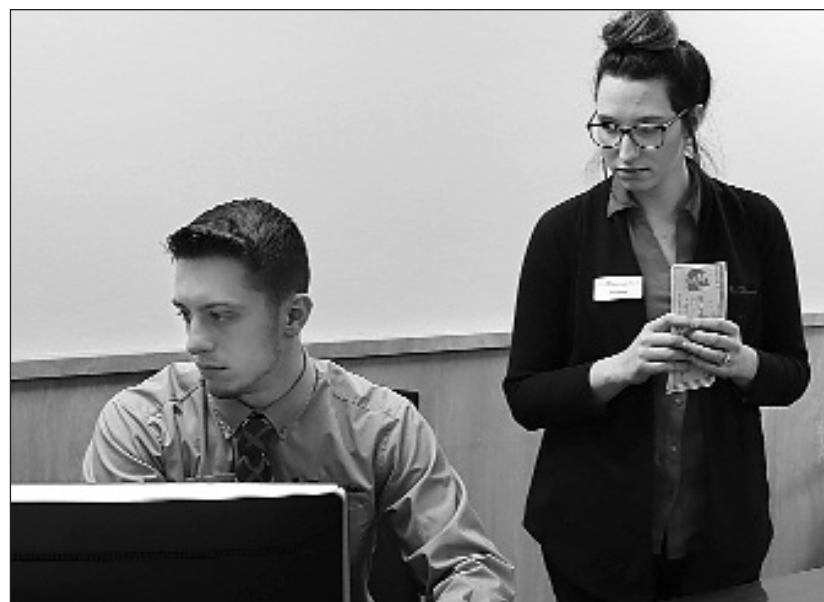
"We want to let you know that as a new customer, we're not here just for home purchase or your investment accounts, we're really here from the beginning to the end," he said. "We truly mean that we help you from your beginning destination all the way up through retirement and the whole step of the way."

To that end, the Williamsport/Lycoming Chamber of Commerce will be holding a ribbon-cutting event at 4 p.m., March 25, which offers a great opportunity for individuals or small business to get their questions answered, he said.

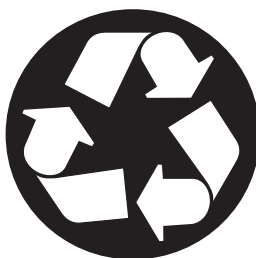
"I would love to meet everyone and I know my staff is ready to meet everyone... small business, big business, everyday person, we want to meet you," he said.



DEREK DANNEKER/
Sun-Gazette



Above, Jackie Shuler, bank teller, assists Jack Callahan, of Montoursville, with a transaction. Left, Michael Alexander, community office manager, left, works on his computer with Kendra Davis, market mortgage load originator, to solve an issue.



The Williamsport Sun-Gazette
is printed on newsprint which
contains recycled material

G=M
Golden Business Machines, Inc.

Canon
imageRUNNER
ADVANCE

1-800-692-6217

Your Document Efficiency Specialists



www.GoldenBusiness.com

201 Basin Street, Williamsport, PA 17701

Serving North Central Pennsylvania for over 20 Years!

Member Renewals

Received between January 3 and January 28



Thank you to our renewing members!

We do appreciate your membership and involvement in the
Williamsport/Lycoming Chamber of Commerce!



Member 120 Years

Plankenhorn Stationery Co.

Member 112 Years

Lycoming Engines

Members 43-64 Years

Axeman-Anderson Company

Lamar Outdoor Advertising

Logue Industries, Inc.

Nesco Resource

Norcen Industries, Inc.

PPL Electric Utilities

Ralph S. Alberts Co., Inc.

Robert M. Sides Family Music Centers

Williamsport Area School District

Members 31-40 Years

Berkshire Hathaway HomeServices Hodrick Realty

Clyde Peeling's Reptiland

CSR Enterprise Networks

Eagle Janitorial Supply & Service Company

Faxon Cleaners, Inc.

Hilsher Graphics

Huffman's Office Equipment Co., Inc.

JanWay Company

K. C. Larson, Inc.

Kellogg Company

M & M Sheet Metal and Steel Fabricators

Nevills Flowers and Shulze Mansion Venue

R & J Ertel, Inc.

Susquehanna Trailways

The Blessing Insurance Agency, Inc.

Woolrich Company Store

Members 26-30 Years

American Cancer Society

First Community Foundation Partnership of Pennsylvania

Gearhart, Wienecke & Verrastro, PC

Larson, Kellett & Associates, P.C.

Rainbow Carpet

Thompson's Food Service

Transitional Living Centers, Inc.

Wascher's Chiropractic Center

Members 22-25 Years

Community Arts Center

Fulton Bank

Glenn O. Hawbaker, Inc.

Hurwitz Batteries, LLC

Lycoming County SPCA

Penn Recycling, Inc.

Wayne Township Landfill

WBRE-TV

Members 16-20 Years

Boy Scouts of America-Susquehanna Council

Economy Locker Storage Co., Inc.

Fisher Mining Company

Information Technology Services, Inc.

Keystone Advertising Specialties

Lycoming County Water & Sewer Authority

McTish, Kunkel & Associates

Nittany Mountain KOA Campground

PA CareerLink - Lycoming County

Presbyterian Home at Williamsport

State Farm Insurance, Tony Dgien Agent

Williamsport Crosscutters

Williamsport Electric, Inc.

Members 11-15 Years

Alta Resources, LLC

Callahan's Antiquities

Comfort Keepers

Corter's Flooring America

Gustonian Gifts

JW Aluminum-Williamsport Operations

Kliney's Home Furnishings

Lang's Chocolates

Spherion

Tiadaghton Inn

Ultimate Express Car Wash

Zartman Construction, Inc.

Members 3-9 Years

Andrée P. Phillips

Blooming Grove Historical Society

Central Contracting

Covenant Builders, Inc.

Goodwill Industries of North Central PA

Harold Eck, CPA

Hub's Home Oxygen & Medical Supplies, Inc.

J. L. Winters Jewelers

Kiwanis Club of Williamsport

Lindsay & Hager Accountants

M-B Companies, Inc.

Quandel Construction Group, Inc.

Scissor's Edge

TGI Fridays

The Liberty Group

TLC Fitness

First Year Renewals

A1 Stop/Beer Here

LegalShield

ManorCare Health Services - Williamsport North

Ralph Palmer of XPO Logistics

Williamsport Wood Floors

The Williamsport/Lycoming Chamber of Commerce Education Committee

Invites you to our Nineteenth Annual



Education Celebration

Thursday, March 5, 2020

Registration: 5:30 p.m.

Program: 6:00 p.m. – 8:00 p.m.

Williamsport Country Club

800 Country Club Drive

Williamsport

Reservations Required

To register, visit www.williamsport.org

or call the Chamber at 570-326-1971

Featured Awards

Outstanding Educator

Outstanding Senior of the Year

Business Partner in Education

Alumni of the Year

Member News in Lycoming County...

Susquehanna Community Bank Donates \$2,500 to American Red Cross



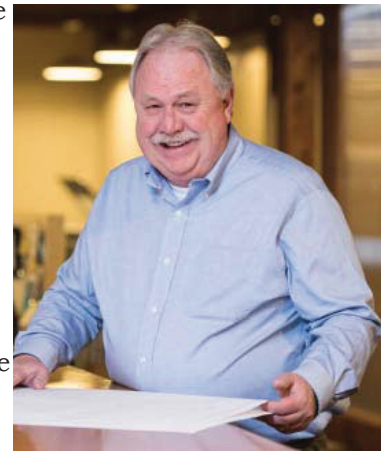
Mike Loeh (right), Assistant Vice President/Commercial Relationship Manager presents a check on behalf of Susquehanna Community Bank in the amount of \$2,500 to the American Red Cross – North Central PA through the Educational Improvement Tax Credit (EITC) Program. Accepting is Thomas Szulanczyk, Executive Director of the American Red Cross – North Central PA.

The American Red Cross prevents and alleviates human suffering in the face of emergencies by mobilizing the power of volunteers and the generosity of donors.

Providence Engineering Announces Promotions

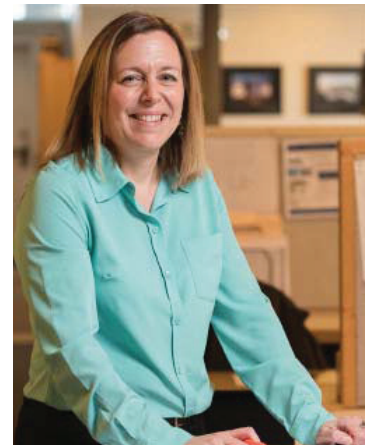
Barry Foreman steps into his new role of Executive Vice President after serving as Vice President of Engineering for 4 years. With a career spanning more than 4 decades, Barry has led the growth of Providence's Warehouse & Distribution market, as well as the expansion of our design services across the United States. Barry's depth of experience, engineering expertise and professional leadership are invaluable assets that will continue to benefit our firm and all the clients that we serve.

Carol-Ann Denning has been promoted to Vice President of Engineering after serving as the Director of Engineering for 2 years. During this time, Carol-Ann led Providence's team of 50 engineers as they provided



design services across all markets. In addition, Carol-Ann strategically improved Providence Engineering's technical deliverables and quality control processes. In her new role as Vice President of Engineering, Carol-Ann will continue to focus on Providence's design deliverables to ensure that quality, timely and affordable solutions remain the hallmark of our firm.

We're very excited to welcome both Barry and Carol-Ann to their new roles and responsibilities. We look forward to their continued success as members of Providence Engineering's leadership team.



Jersey Shore Area Chamber of Commerce Winter Mixer

Thursday, February 27, 2020

5:00pm - 7:00pm

Tiadaghton Inn

1120 Allegheny Street ~ Jersey Shore

~ Complimentary Buffet ~ Cash Bar ~

Sponsored By:



Sponsorships are also available!

To make a reservation or be a sponsor, call or visit the website.

Phone: (570) 326-1971 or register online at www.williamsport.org

Revolving Loan Fund

To assist businesses with their financial needs for construction, renovations, equipment purchases and working capital.

For more information or application, contact Nancy Eischeid at the Williamsport/Lycoming Chamber of Commerce at 570-326-1971.




PRINCE FARRINGTON'S

BOOTLEGGER TOUR KICKOFF



WILLIAMSPORT
LYCOMING COUNTY, PA

SATURDAY, MARCH 7, 2020 | 7:00PM - 10:00PM

at the Williamsport/Lycoming Chamber of Commerce
102 West Fourth Street, Williamsport, PA 17701

TICKETS

\$30 for Chamber members, \$40 for nonmembers

Be the first to receive the Prince Farrington's Bootlegger Tour Passport (\$30 Value)
Also included with ticket: all tastings, tasting glass, non-alcoholic beverages, appetizers

FEATURING

BULLFROG BREWERY | BOOM CITY BREWING CO. | RIEPSTINE'S PUB & BREWERY
BALD BIRDS BREWING CO. | NEW TRAIL BREWING CO. | OREGON HILL WINE CO. | MOUNTAIN TOP DISTILLERY
THERAPY BREWING | FOUR FRIENDS VINEYARD & WINERY | GELLELLA TERRA VINEYARD



With Coffee Tastings from Alabaster
Coffee Roaster & Tea Co.

REGISTRATION

Visit williamsport.org or call the Chamber at 570.326.1971